

West Pennine Moors Area Management Committee

Minutes of the Meeting held on Wednesday, 15th July, 2015 at 10.00 am in Cabinet Room 'D' - The Henry Bolingbroke Room, County Hall, Preston

Present:

Chair

County Councillor Jackie Oakes, Lancashire County Council

Committee Members

Councillor Kim Snape, Chorley Council

Councillor Gordon France, Chorley Borough Council

Councillor Mrs Jean V Rigby, Blackburn with Darwen Borough Council

Councillor Brian Essex, Rossendale Borough Council

Councillor Adrian Lythgoe, Rossendale BC

Neville Kidd, United Utilities

Hazel Gregory, United Utilities

Tim Mitcham, Wildlife Trust for Lancs, Manchester & N Merseyside

Michael Counter, Representative for Local Advisory Groups

Ben Williams, Groundwork Cheshire, Lancashire and Merseyside

Officers

Fiona Cruchley, Lancashire County Council

Lindsey Blackstock, Chorley Council

Andy Grundy, Bolton Council

Sharon Montgomerie, Lancashire County Council (Clerk)

1. Apologies for absence

Apologies for absence were received from Councillor Stephanie Brookfield, Blackburn with Darwen Council, Amanda Wright and Mick Houlding, Natural England.

2. Minutes of the meetings held on 27 January 2015 and 8 July 2014

The minutes of the meetings held on 27 January 2015 and 8 July 2014 were **agreed** as a correct record.

3. Partner reports on project activity

Lancashire County Council

Fiona Cruchley gave the Committee an update on project activity since the last meeting and re-iterated that as in 2013/14, Lancashire County Council activity in the West Pennine Moors continues to be limited, but mainly extends to a ranger post which covers Healey Nab as part of overall duties, complemented by the work of a dedicated team of volunteer rangers, who patrol the site on Sundays, carry out site checks and help interpret the site to visitors.

Fiona reported that maintenance of the public rights of way network is ongoing as part of the statutory responsibilities of the County Council (often carried out in partnership with United Utilities' ranger team)

However, she also advised that a project had been developed, which pays nominal fees to Parish Councils and community groups to undertake routine maintenance on Rights of Way on behalf of the County Council. If anyone is interested in finding out more, they should contact Fiona Cruchley.

Clarification was sought on whether the task and finish group was still meeting and it was confirmed that proposals for management of the Moors Area considered by the task and finish group were still being explored and that an update would be provided later in the meeting under Agenda Item 6.

Members paid compliment to the standard and condition of signage within the WPM and the standard of bridge repairs that had been carried out.

United Utilities

Neville Kidd gave the Committee an update on activity since the last meeting and included:

- Clearing back, thinning out and mowing at Jumbles
- Work at Crookfield Road Car Park
- Drainage work in Rivington at Anglezarke near Rivington and Blackrod High School
- Footpath extension at Spitlers Edge
- Japanese Knotweed Control
- Path and Step Refurbishment
- Replacing Fencing at Bradshaw Valley
- Lever Park tree surveys

Lancashire Wildlife Trust

Updates were given to the Committee in respect of:

- New Grasslands Project, in its first year, but with the possibility of a presentation to the next meeting of the AMC
- Biodiverse Society, a Heritage Lottery funded project, which supports people by providing training courses, mentoring and engaging with school children in respect of biodiversity.
- Blanket Bogs in the WPM – a life bid had been submitted, although funding had not yet been confirmed. It was hoped to be able to provide a positive report to the next meeting.

Neville Kidd reported to the Committee the SCAMP project, delivered over the last five years, and which had aimed to re-wet Moors, and re-create Bogs that were degrading, was due to come to an end.

Councillor Jean Rigby advised that there was a poaching problem at Entwistle; Neville Kidd was aware that there were issues with poachers setting up on the river bank; Ian Harper, the Wildlife Warden and the Police were getting involved.

Councillor Snape reported that Chorley Council had given £5,000 to Friends of Healey Nab, to be included in their joint bid for funding with LCC.

Councillor Essex reported that the LWT was undertaking a programme of Japanese Knotweed eradication on the River Ogden; to which Rossendale BC had made a financial contribution. A suggestion was made that this might be included on the agenda for next time.

Neville Kidd added that the problem of invasive species was growing; to bring it under control would be a massive undertaking, and involve a 3 to 5 year programme of works.

Local Advisory Groups (LAGs)

Michael Counter, representing the Local Advisory Groups within the WPM advised that in future issues raised in the minutes of the LAGs would feed into AMC meetings, so that these could be brought to their attention.

The Chair thanked partners for the updates provided and it was **resolved** that the update reports be noted.

4. Rivington Terraced Gardens

Ben Williams, from Groundwork Cheshire, Lancashire and Merseyside made a presentation on an HLF funded project which Groundwork have been undertaking to preserve, protect and repair Rivington Terraced Gardens.

A copy of the presentation is attached to these minutes.

It was noted that plans for the future included further proposed project work to conserve, protect, repair and interpret the Gardens. In terms of timeframes, this has required a Stage 2 HLF submission which would be submitted in August, with a decision expected in December.

Assuming the application was successful, further design, development and tendering would take place through 2016, with a 12 month implementation phase during 2017; followed by management and maintenance from 2018-20.

Should members wish more details, they should contact Ben by emailing him at: ben.williams@groundwork.org.uk

Or alternatively they could find further details on the Rivington Terraced Gardens Facebook page.

Members expressed their thanks and enthusiasm about the presentation and were keen for the Committee to take a visit to Rivington Terraced Gardens;

It was **resolved** that such a trip would be organised for AMC Members post September.

5. Verbal Update on SSSI notification project

Fiona Cruchley reported to the Committee in Mick Holding's absence. The application for SSSI designation has been ongoing for a very long time. At the moment, outstanding applications for designation have been put on hold nationally, and therefore no decision would be made on the application for SSSI status for the West Pennine Moors.

Members expressed concern about the potential for waste and mineral (quarry) planning consent to be granted within the area which may have a detrimental impact upon the landscape and putting at risk the designation being applied for.

It was **resolved** that a letter of representation be prepared on behalf of the Committee and submitted to the Secretary of State. It was pointed out however, that in taking this action, this did not preclude individuals on the Committee from making private representation on the same issue.

It was also **resolved** that a further update on SSSI designation be requested for the next meeting.

6. West Pennine Moors Task and Finish Group Next Steps

Fiona Cruchley presented the report of the task and finish group on future governance and activity.

She advised that the last meeting of the Area Management Committee established a task and finish group to look at how the Committee's work could be progressed with the resources currently available.

It was recognised that joining up activity around the West Pennine Moors is crucially important, building on a long history of cooperation. It was felt that despite limited resources available to local authorities at present that the group needs to continue meeting and looking at creative ways to maintain activity and ensure that the broad range of interest in the area was represented effectively.

Priorities identified

- Getting WPM designated – as soon as possible as SSSI.
- Strengthen links between officer working group and area management committee
- Strengthen links between local advisory groups and area management committee
- Recognition of the role of volunteers in managing the area – and potential for a project to encourage better coordination of this

- Ensuring relevant partners are represented on Area Management Committee – current membership is strong from local authorities and conservation organisations but more limited from access and recreation groups

It was reported that over the next 6-12 months, there were a number of actions to be undertaken and that these would be as follows:

- Investigate the potential for a project to join up the volunteering opportunities and good practise in the area – including how they can support maintenance of access routes. Review which organisation could best host this project, and which groups currently make significant contributions to the area – this could include Friends of Healey Nab (maintaining trails), Lancashire Wildlife Trust (managing their sites and monitoring wildlife) and parish councils. Identify potential sources of funding to support this work, and lead organisations for delivering this.
- Identify additional interest groups that should be invited to join the AMC.

Suggestions were put forward by Members, particularly around making greater use of volunteering and exploiting links with partners, charities and social enterprise companies such as Pennine Prospects to further the aims of the AMC in protecting, conserving and promoting the natural and cultural heritage of the West Pennine Moors, promoting sustainable development within it and encouraging enjoyment of the area.

The Chair thanked Fiona for updating the Committee and it was **resolved** that the report be noted.

7. Any Other Business

None was raised.

8. Date of Next Meeting

It was resolved that the next meeting of the West Pennine Moors Area Management Committee would take place on the following dates and at the following locations:

- Wednesday 27 January 2016 at Jumbles Country Park
- Wednesday 13 July 2016, location to be determined

A date and time was proposed for a visit to the Rivington Terraced Gardens, as 23 September 2015, meeting at 2pm, at the Barn in Rivington; refreshments would be provided for those in attendance.

The Chair thanked all for their attendance and concluded the meeting.

I Young
Director of Governance,

County Hall
Preston



West Pennine Moors AMC
15th July 2015

**Rivington Terraced
Gardens**

Minute Item 4



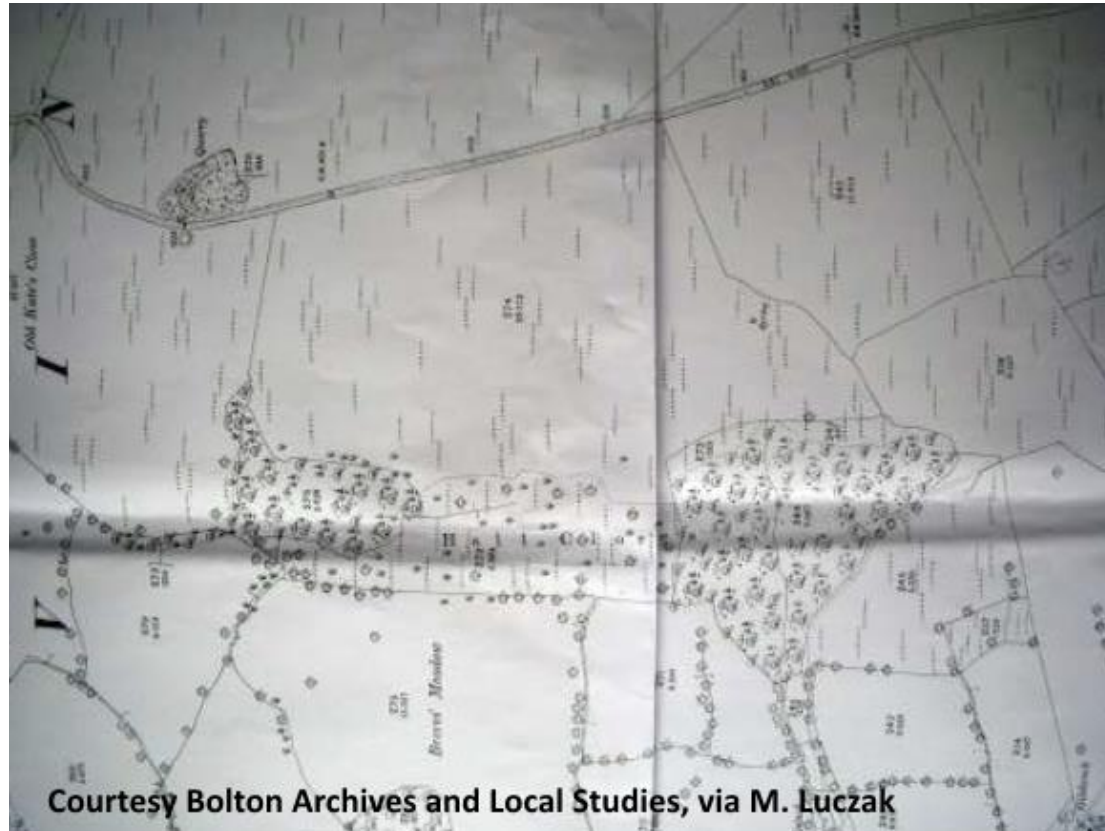
Overview

- Rivington before Lever
- Lever and Mawson
- Roynton Cottage and Phase 1
- The Bungalow and Phase 2
- Post-Lever – Magee to the present day
- Legacy written in landscape?
- Plans for the future
- Timing



Rivington before Lever

1892 OS Map



Courtesy Bolton Archives and Local Studies, via M. Luczak



1907 OS Map



Courtesy Bolton Archives and Local Studies, via M. Luczak



Lever and Mawson

“I have wanted to consult you for the last two years, but all of my friends warned me that it would be useless, as you never worked for anyone holding less social rank than a Duke, whereas I am only a poor and indigent soap maker.”

W.H.Lever, 1905 (M.D.Smith)



Lever and Mawson

“Of all the gardens which have ministered to my professional enjoyment, none comes into competition with Roynton.

*The reason is a very human one.
Everyone prophesied failure.”*

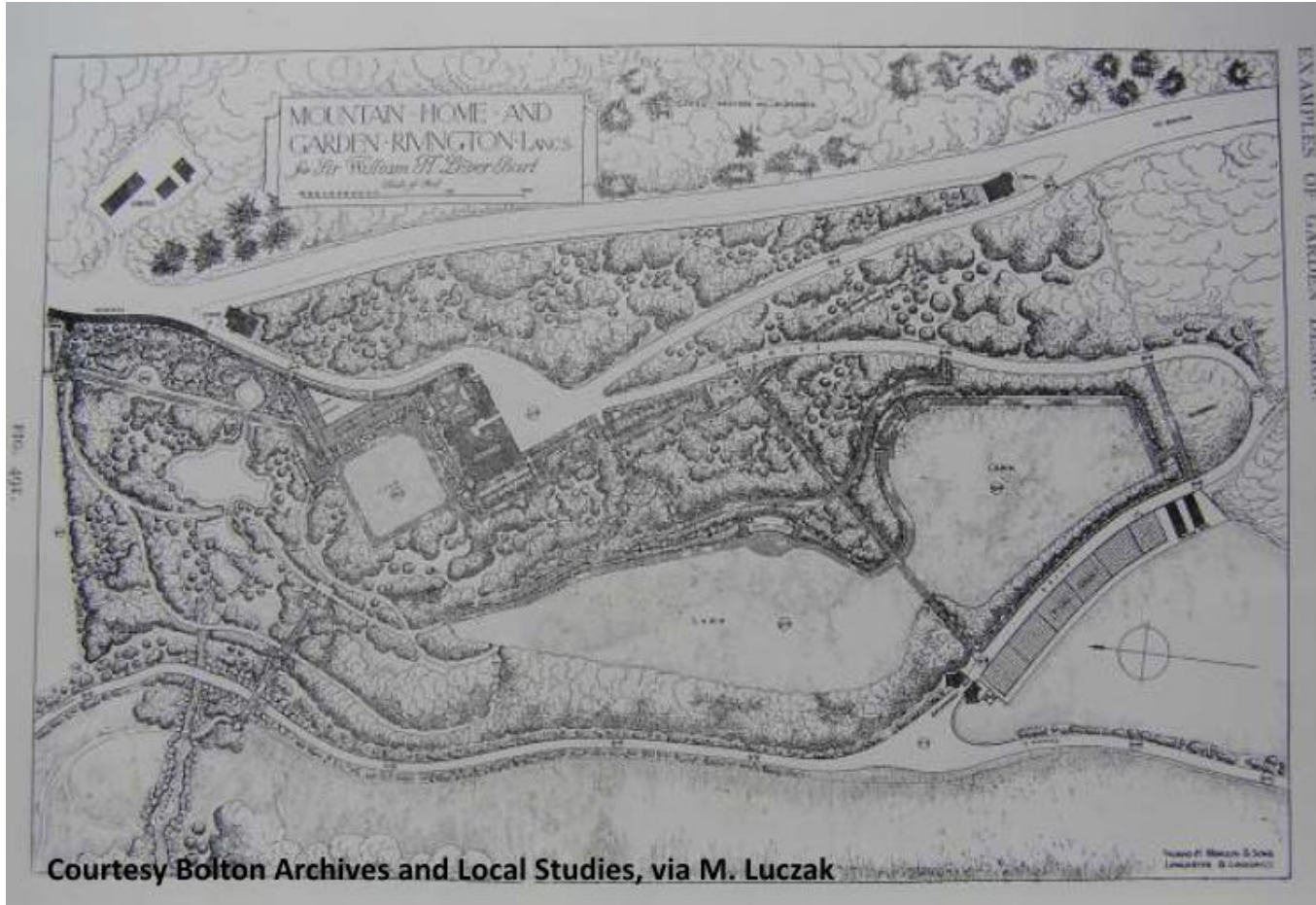
Thomas H Mawson, The Life and work of an English Landscape Architect (via M. Luczak).



Roynton Cottage and Phase 1



Courtesy Cumbria Archive Centre, Kendal, via M. Luczak



Courtesy Bolton Archives and Local Studies, via M. Luczak



“I want to ask Sir William Lever whether he thinks his property on Rivington Pike is more valuable as one of his superfluous homes occasionally opened to people, or as a beacon lighted for King and Country, to see that here are some intolerable injustices for women”.

Edith Rigby, 1913

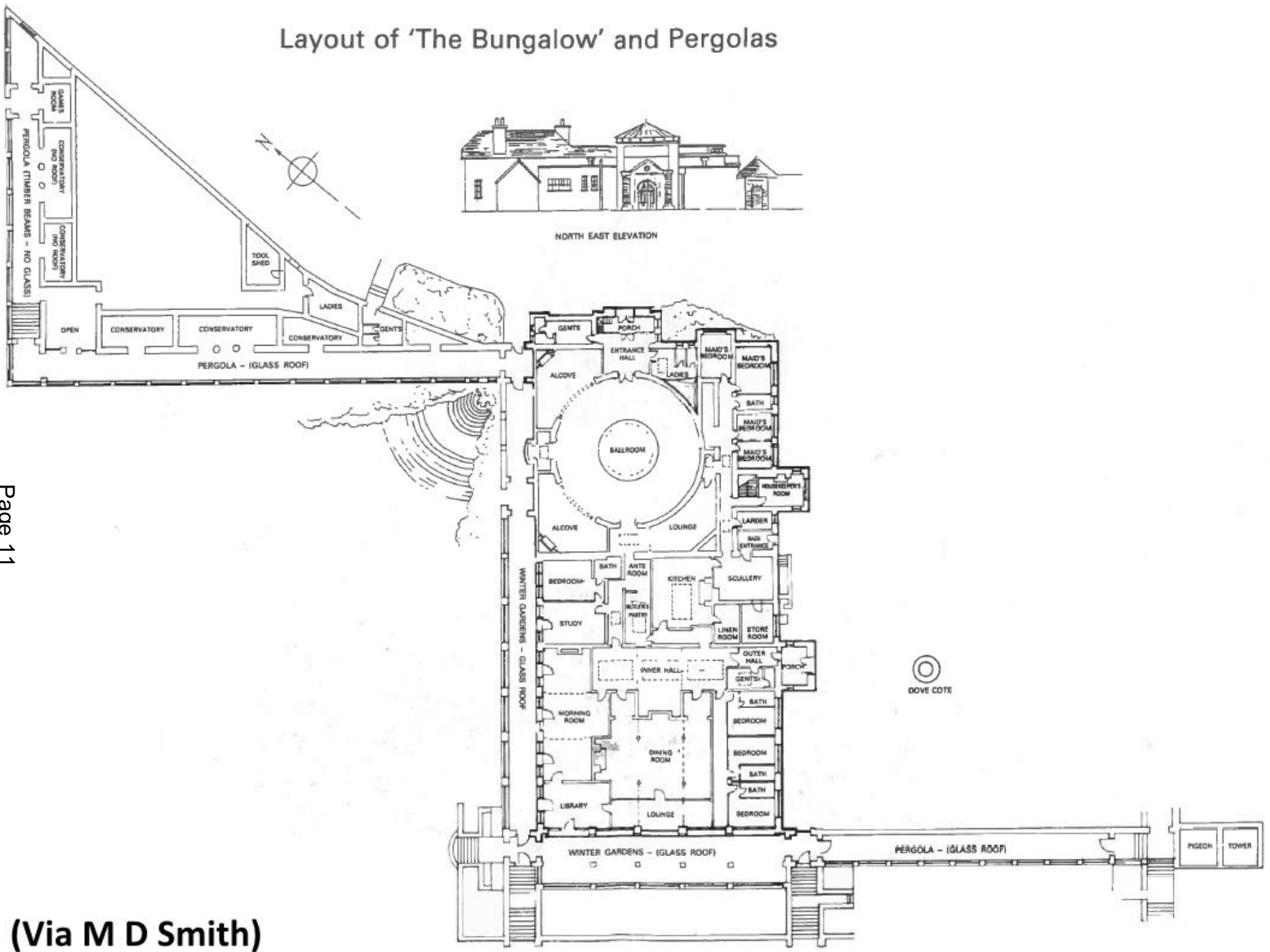


The Bungalow and Phase 2

(Via M D Smith)



Layout of 'The Bungalow' and Pergolas



Page 11

(Via M D Smith)



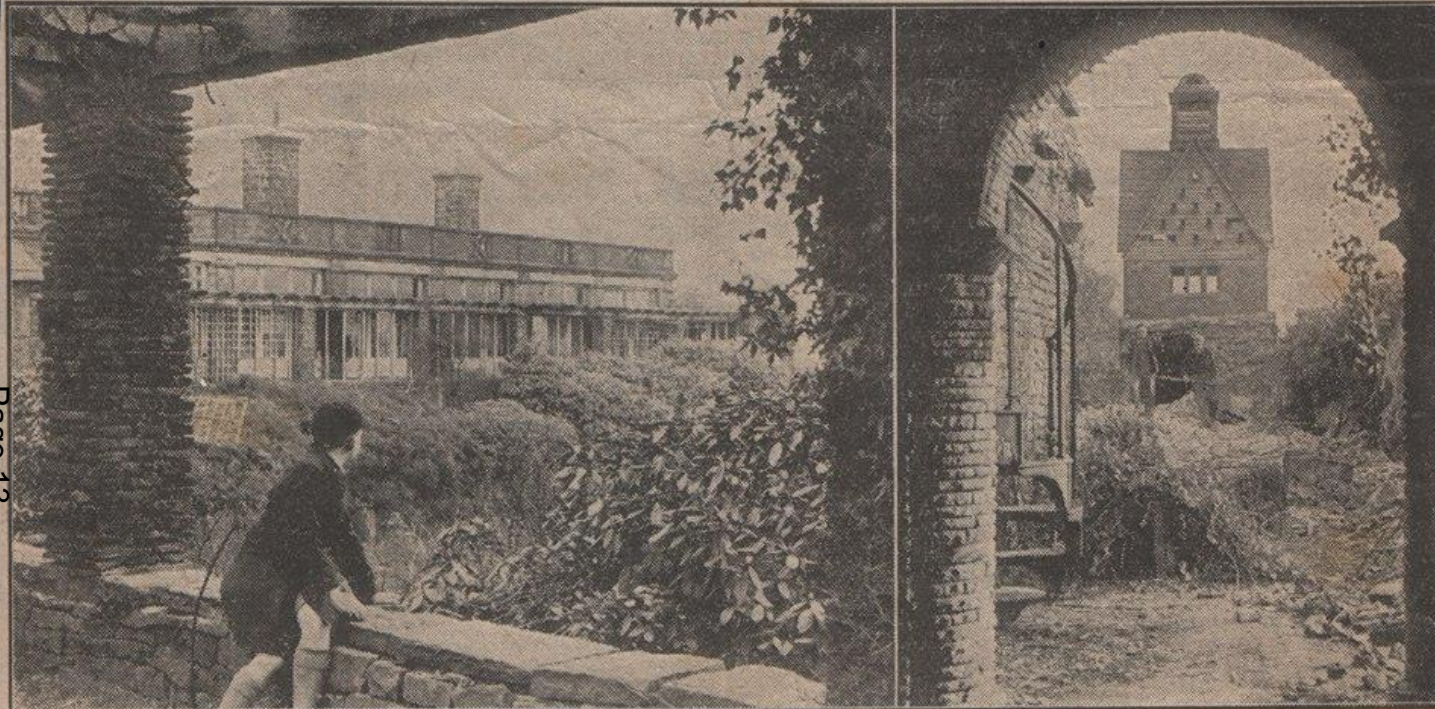
Post-Lever – Magee to Present

- No significant additions to the Gardens
- MoD occupation in WWII
- Principal buildings successively demolished
- De facto public access to Gardens
- Management for water catchment
- Gating of Summer Houses/Loggias
- Removal of Rhododendron

FRIDAY, FEBRUARY 27, 1948

(HORWICH JOURNAL)

Last Chapter in the Story of Rivington Bungalow



These scenes illustrate the final chapter in the story of Rivington Bungalow, one-time treasured beauty spot, which is now being demolished because no one can find an economical use for which it could be preserved. Our photographs show how the buildings still retain some of the unique charm for which they were famous. Now, however, the former splendours of the Bungalow are taded as workmen complete the process of disintegration, started by long years of neglect and continued by the vandalism of irresponsible visitors. In the grounds, and flowers of unusual beauty, nature is slowly taking over from what seemed destined to revert to the bleak, bare hillside from which they were hewn.

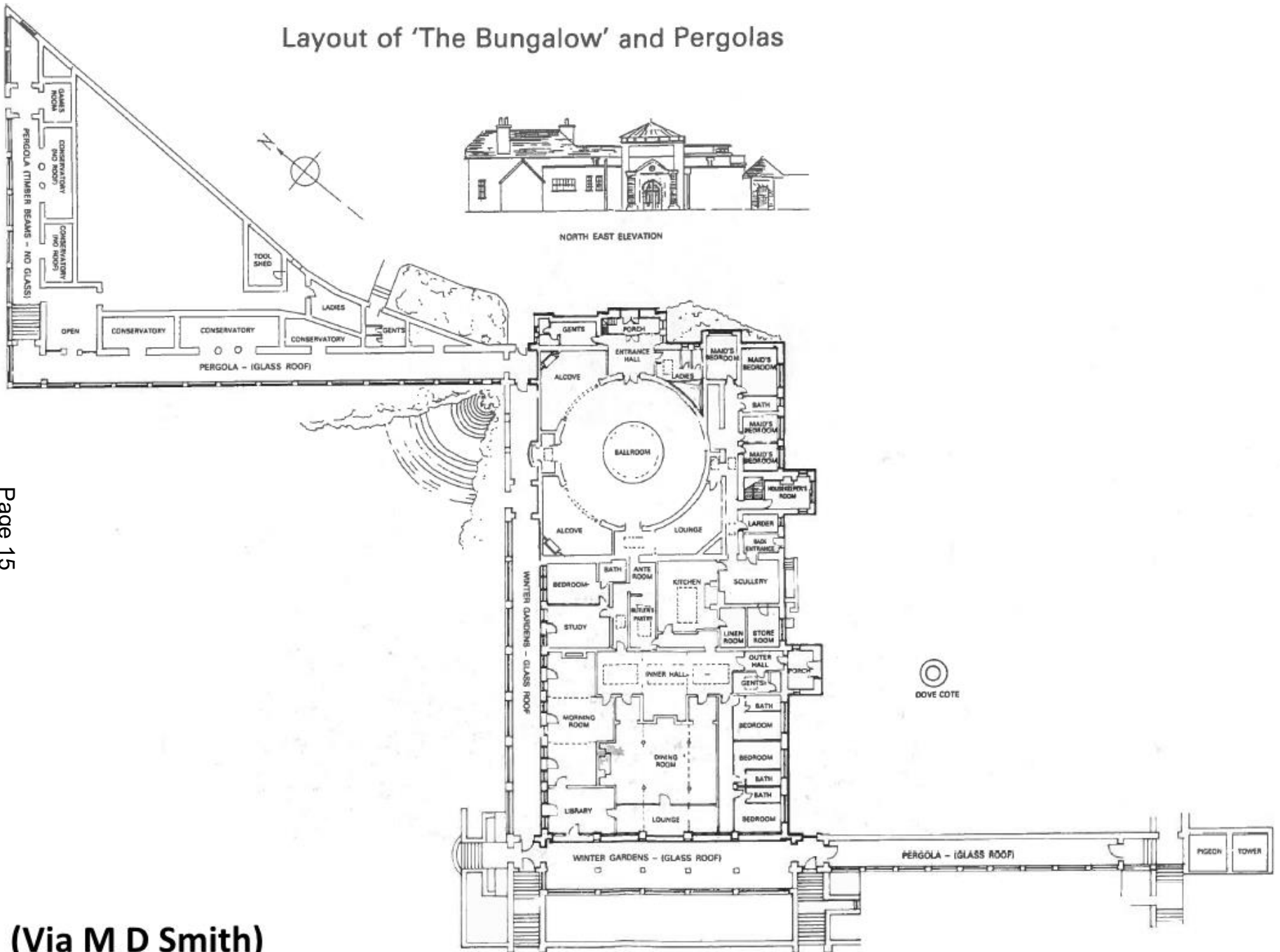
Paul Lacey, via Facebook

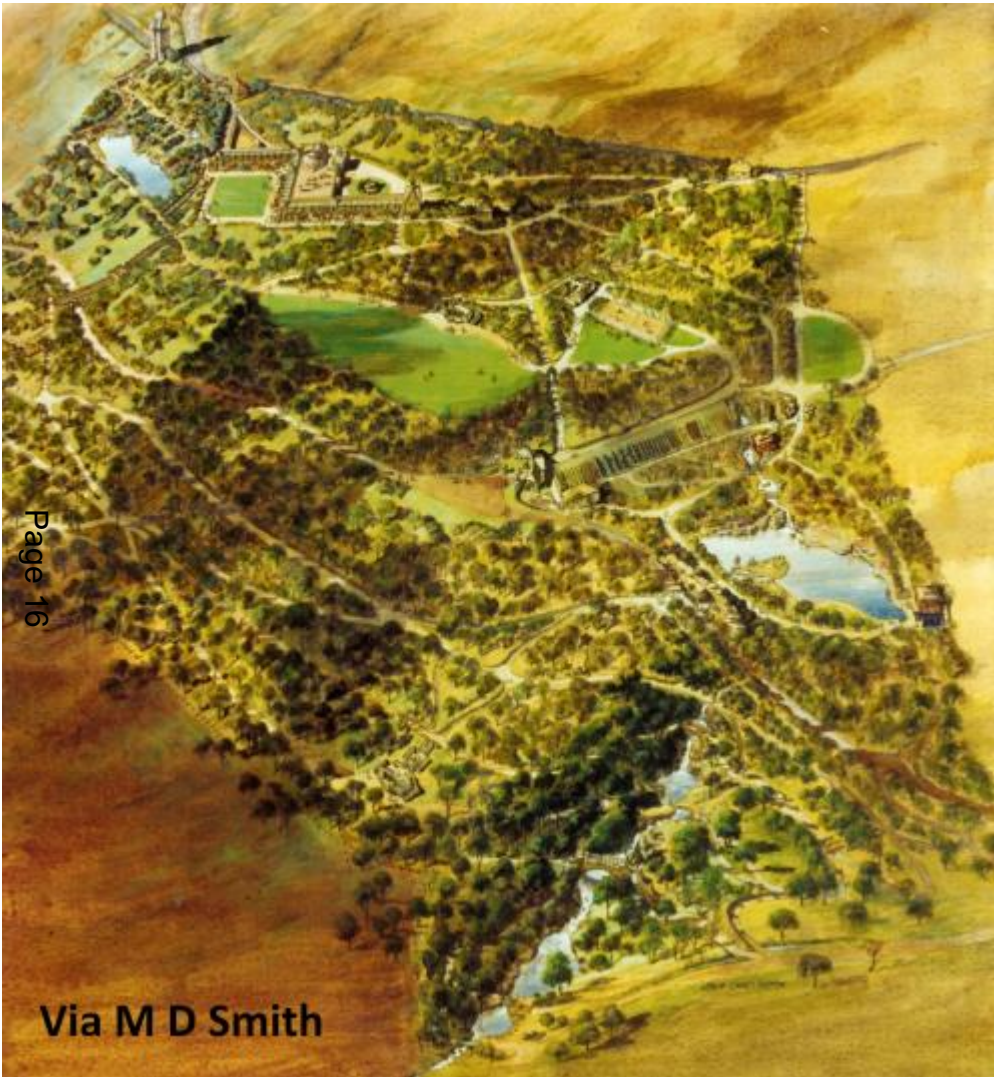


Legacy written in Landscape?



Layout of 'The Bungalow' and Pergolas





Page 16

Via M D Smith



Courtesy Bolton Archives and Local Studies, via M. Luczak



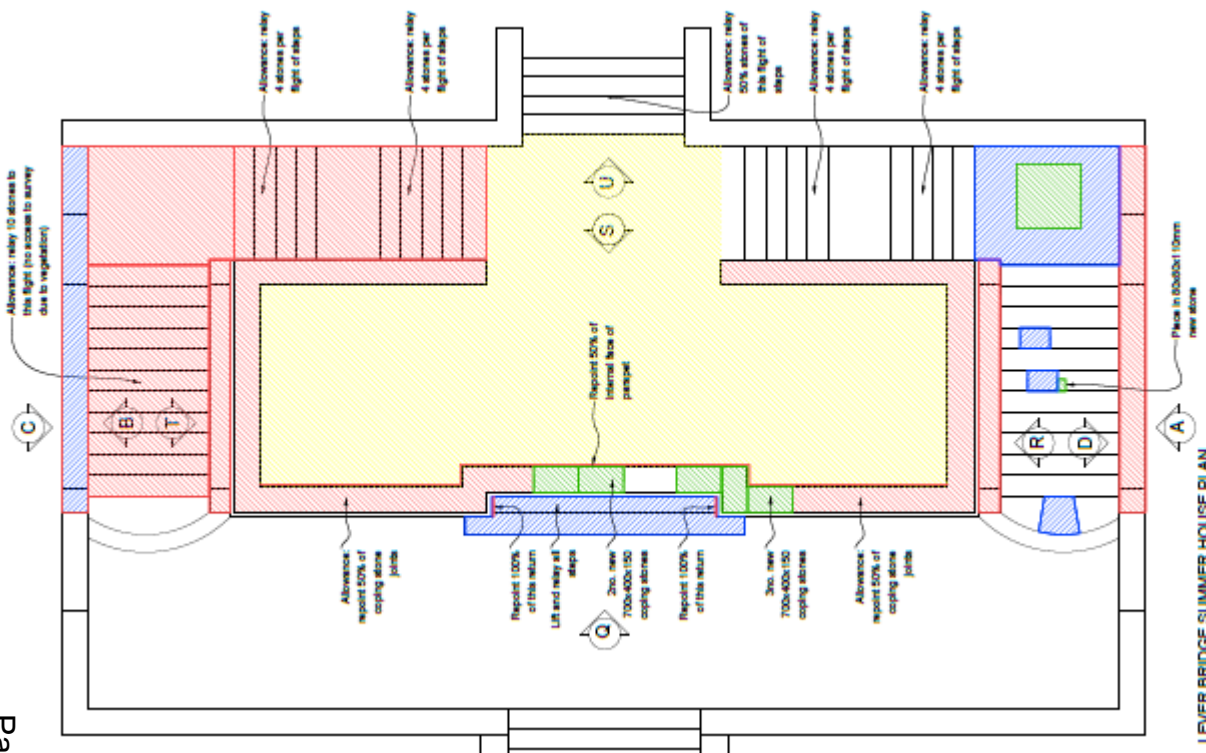
CoD.

Page 17

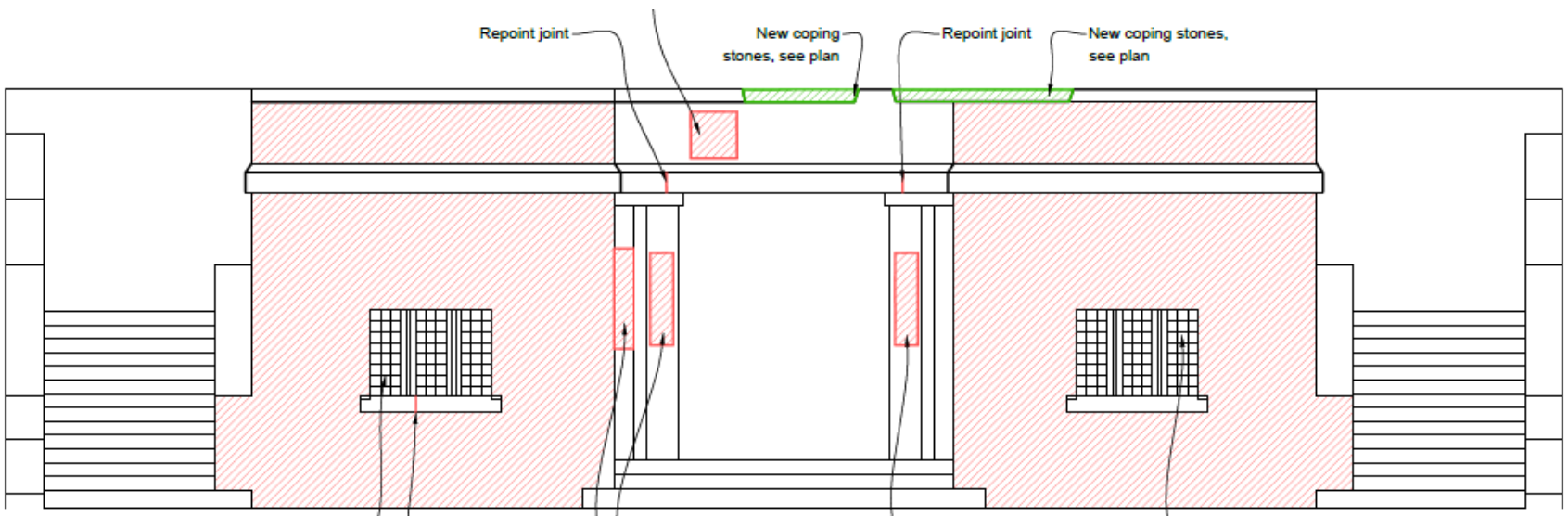


Plans for the Future

- Conserve
- Protect
- Repair
- Interpret

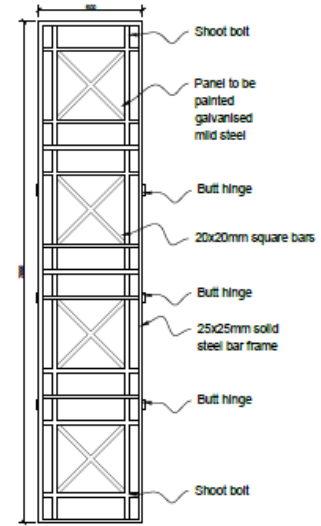
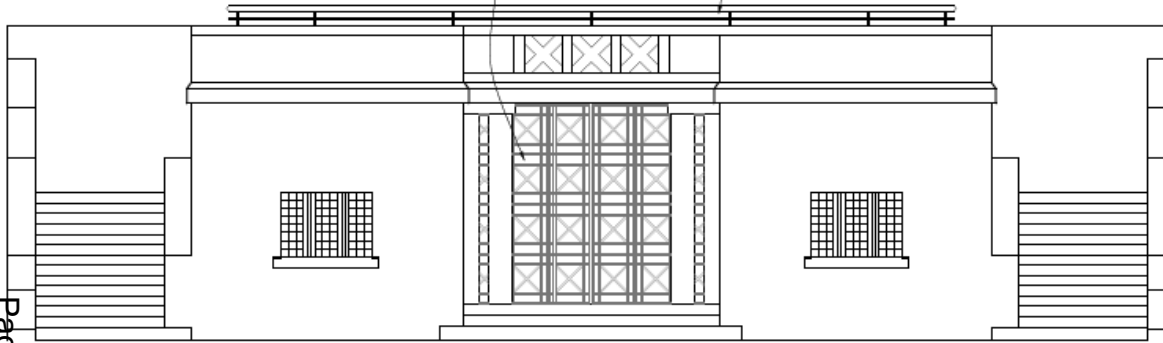


LEVER BRIDGE SUMMER HOUSE PLAN



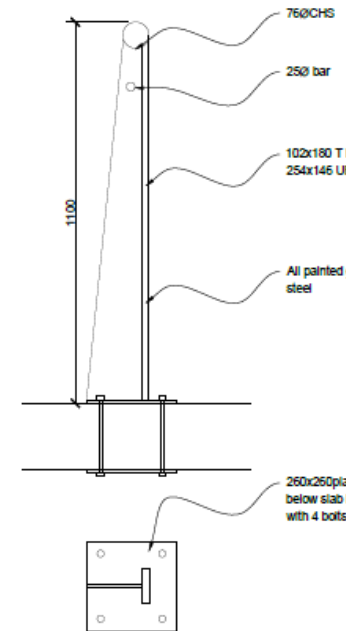
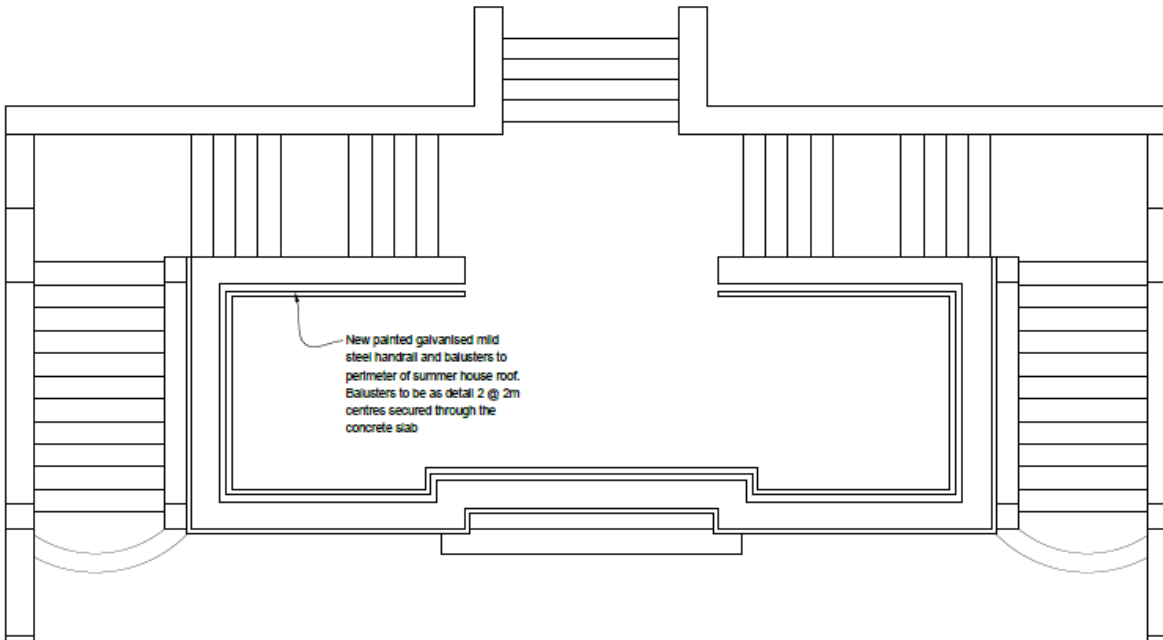
Horizontal folding steel panels with shoot bolts top and bottom to each panel. To be folded back and secured when not in use.

New painted galvanised mild steel handrail and balusters. Balusters to be as detail 2 @ 2m centres secured through the concrete slab

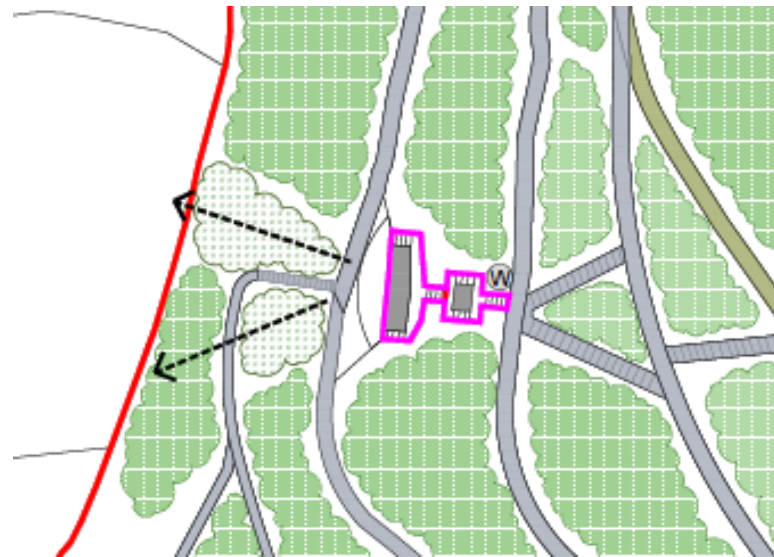
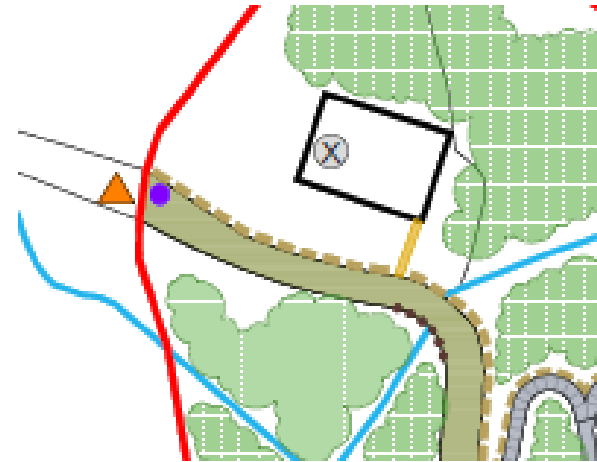
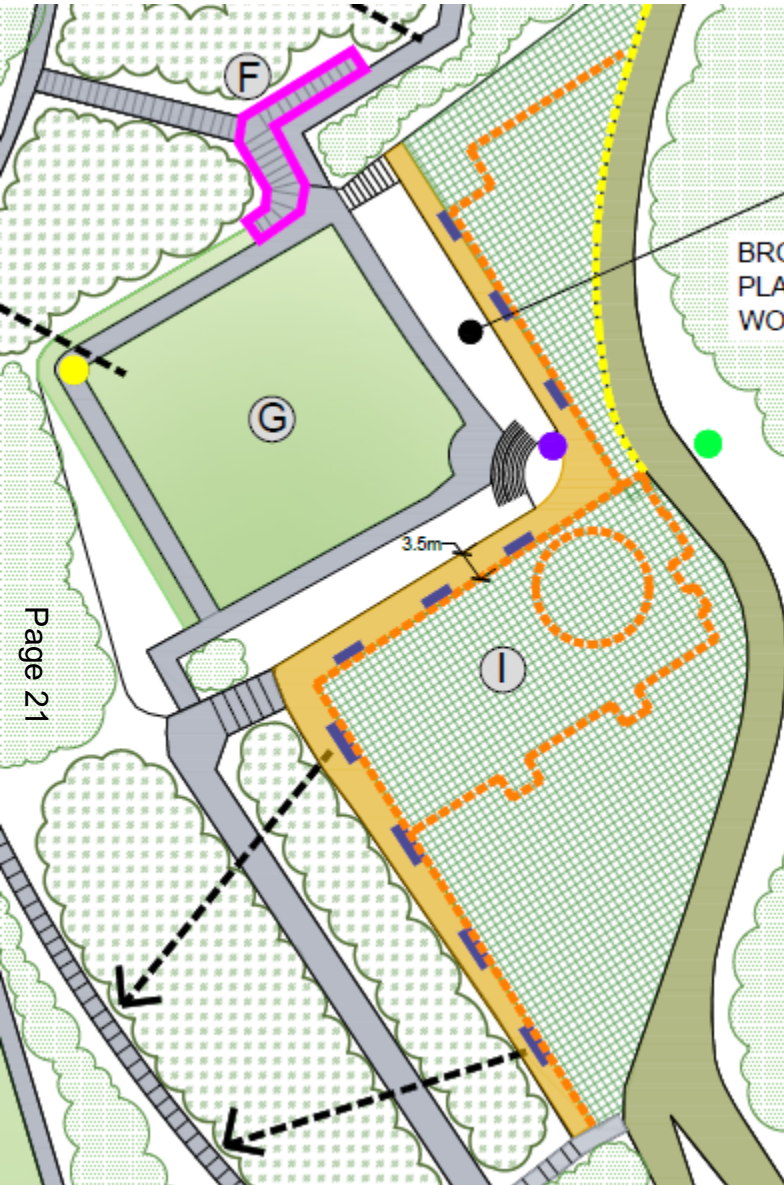


DETAIL 1: SECURITY SHUTTERS
1:20

New painted galvanised mild steel handrail and balusters to perimeter of summer house roof. Balusters to be as detail 2 @ 2m centres secured through the concrete slab



DETAIL 2: NEW BALUSTRADE
1:10





Timing

- Stage 2 submission – August 2015
- Decision – December 2015
- Further design development and tendering – through 2016
- Implementation – 2017
- Activity Plan – 2016 – 2019
- Management and Maintenance - 2018



